

PRODUCT INFORMATION

AIR LEAK TESTER



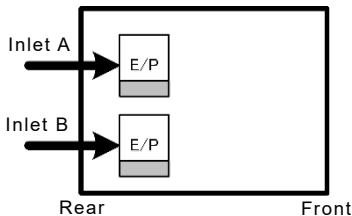
LS-R912 Switching of two test pressures

- LS-R912, designed based on LS-R902, features a function to switch between two test pressure circuits.
- Select the combination of two test pressures (Inlet A and Inlet B) according to your needs.
- Up to 2 E/P Regulators can be installed inside.

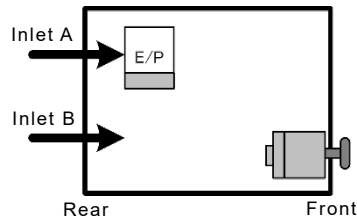
Examples of pressure combinations

*E/P: E/P Regulator

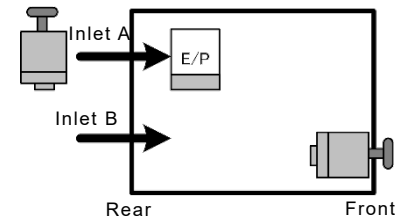
2 E/P Regulators



E/P Regulator & Precision Regulator



2 Regulators



Combinations of pressures

●: Available

		Inlet A								
		MR	LR	VR	M	L	L02	V	H20	H49
Inlet B	MR								●	●
	LR	●			●				●	●
	VR	●	●		●	●			●	●
	M				●				●	●
	L	●			●	●			●	●
	L02						●			
	V	●	●		●	●		●	●	●
	H20								●	●
H49								●	●	

- Set the higher pressure for Inlet A.
- Two Pressure Sensors for the same higher pressure will be installed.
- When selecting "VR" or "V" for Inlet B, only dry works can be used.
- For a combination not listed above, RFQ is required.

Model Classifications

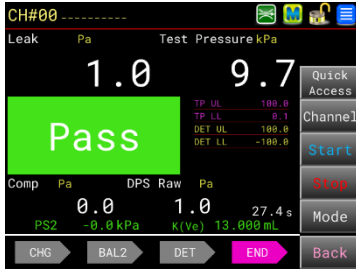
LS-R912(ABCD.E.F) Model codes **A**, **B**, **C**, **E**, and **F** are mandatory.

A	Pneumatic Circuit	A1 : Intelligent 1 Pneumatic Circuit, A2 : Intelligent 2 Pneumatic Circuit, AS01 : Micro Volume Circuit, C : Secondary Pressure Circuit	
B	Test Pressure Range (Inlet A)	Precision Regulator	M : 50 to 800 kPa, L : 10 to 100 kPa, L02 : 5 to 20 kPa, V : -5 to -100 kPa, H20 : 2.0 MPa or less ^{*1} , H49 : 4.9 MPa or less ^{*1}
		E/P Regulator	MR : 50 to 800 kPa, LR : 10 to 95 kPa, VR : -0 to -75 kPa
C	Test Pressure Range (Inlet B)	The same as Test Pressure Range (Inlet A)	
D	Option	G : External Exhaust Valve Ready, J : With CAL Driving Valve For Leak Master, K05 : Come with ALC-05, K1 : Come with ALC-1, K4 : Come with ALC-4, K10 : Come with ALC-10, B : Bypass Circuit Ready without Precision Regulator ^{*2} , F1 : Blow Orifice Φ1.2, R1 : E/P Regulator Ready, RX02 : Nylon Filter Housing (Filter for the pilot pressure), RX03 : Nylon Filter Housing (Filter for the pilot pressure and test pressure), RX06 : Pilot Pressure Port Comes with Filter Only, RX11 : 100 Channels, N5A : EtherNet/IP, N6A : PROFINET, D4 : DPS Range: 10 kPa, PX1 : NPT Fittings	
E	Display Unit	UX1 : SI units only (Mandatory for Japanese customers), UX2 : All units (For overseas only)	
F	Power Cable	VA : 125 VAC 3 m, VE : 250 VAC 2 m, VK : 250 VAC 2 m (Only for Chinese customers)	

*1: H20 and H49 models come with no regulator. *2: B: Inlet B only

Features (LS-R912 Screens)

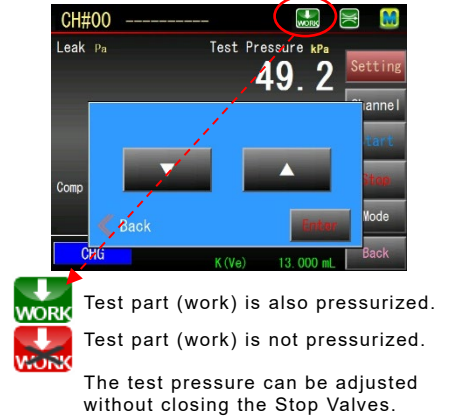
Measure Screen (Standard)



Inlet Select





Charge Hold



Language

English, Japanese, Chinese, Korean,
German

 Test part (work) is also pressurized.
 Test part (work) is not pressurized.
The test pressure can be adjusted without closing the Stop Valves.

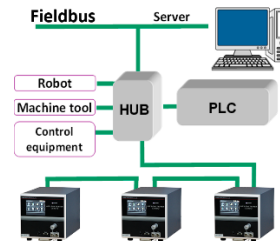
Specifications

DPS	Resolution	0.1 Pa
	Accuracy *1	±2.5 % of rdg ±1 Pa (Guaranteed Range: ±1000 Pa) However, for 50 Pa or less, ±2 Pa.
	Sensor Proof Pressure	5 MPa
Unit *2	Test Pressure	kPa, MPa (kg/cm ² , PSI, bar, mbar, mmHg, cmHg, inHg)
	Leak	Pa, kPa, mL/s, mL/min, L/min, Pa·m ³ /s, E-3 Pa·m ³ /s, Pa/s, Pa/min, *Pa/s, *Pa/min (mmH ₂ O, inH ₂ O, mmHg, in ³ /min, in ³ /d, ft ³ /h)
	Equivalent Internal Volume	mL, L (in ³ , ft ³)
Leak Display		3 to 5 digits (Floating point) Sampling Rate: 10 times/s
Leak Limit		Up to ±999.9 Pa
Number of Channels		32 channels (#0 to #31)
Timers		Up to 999.9 s (Resolution: 0.1 s)
Test Pressure Source		Clean air Sufficiently higher than the test pressure and the pilot pressure.
Pilot Pressure		400 to 700 kPa
Port Size		Rc(PT) 1/4 Test pressure source, Pilot pressure source, WORK and MASTER ports
LCD/TP		5.7 inch color LCD 640 x 480 dots (VGA)
Ambient Temperature		Operation Temperature: 5 to 45 °C Storage Temp.: -20 to 60 °C
Ambient Humidity		80 %RH or less / No dew condensation
Weight		Approx. 13.5 to 17.5 kg
Communication		RS-232C, Fieldbus
USB Port		Test Data, Test Parameter Backup, System Backup, Firmware Upgrade
Power Source		100 to 240 VAC ±10% at 50/60 Hz, 80 VA max
Environmental Conditions		Over voltage category II Protection class I Pollution degree 2 Place to use: Indoor Altitude 2000 m or less
Standard Accessories		Power Cable Depending on the option. Control I/O connector, Inspection Record, Operation manual

*1 For the option of DPS Range ±10 kPa:
±5% of rdg ±0.01 kPa. However, for 0.2 kPa or less, ±0.02 kPa.
*2 The units in () are not available for SI unit restriction models.

* The contents in this product information are as of November 2023. The specifications are subject to change without prior notice.

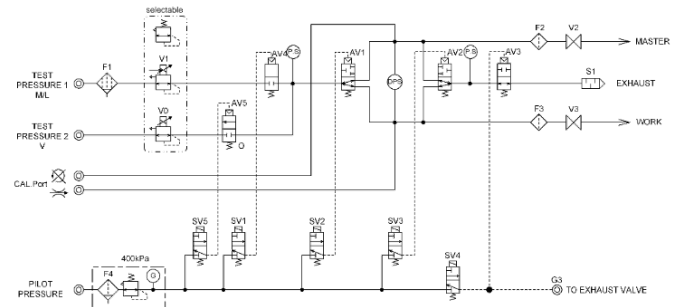
Fieldbus (Option)



- Easier acquisition of measurement data
- More efficient production line
- Reduce the wiring



Pneumatic Circuit

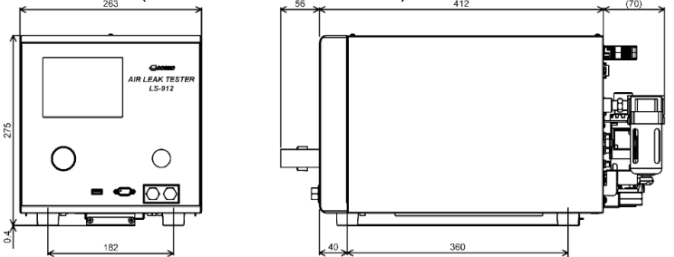


Intelligent 2 Pneumatic Circuit

Test Pressure Range (Inlet A)	Medium (M) / Low (L)
Test Pressure Range (Inlet B)	Vacuum (V)

External Appearance

Dimensions (W263 x H275 x D412 mm)



Cosmo Instruments Co., Ltd.

2974-23 Ishikawa, Hachioji, Tokyo 192-0032 Japan

China: Cosmo (Shanghai) Trading Co., Ltd. Shanghai, Tianjin, Guangzhou, Chongqing, Changchun, and Wuhan	+86-(0)21-6575-6880
Korea: Cosmo Korea Co., Ltd.	+82-(0)32-623-6961
Taiwan: Taiwan Cosmo Instruments Co., Ltd.	+886-(0)2-2707-3131
Malaysia: COSMOWAVE SDN.BHD.	+60-(0)3-51626677
Thailand: Cosmowave Technology Co., Ltd.	+62-(0)21-89328750
Indonesia: Pt. Cosmowave	+62-(0)21-42900043
Vietnam: Cosmowave Technology Co., Ltd.	+84-(0)24-37876085

<http://www.cosmo-k.co.jp/>

Phone: +81-(0)42-642-1357 Fax: +81-(0)42-646-2439

India: Cosmo Instruments India Pvt. Ltd. Head Office South Zone Regional Office, Chakan Office, Chennai Office, Gujarat Office	+91-(0)124-421-0946
Germany: Cosmo EU Solutions Technology GmbH	+49-(0)212-383671-71
USA: Cosmo Solutions Technology, Inc.	+1-248-488-2580
Mexico: Cosmo De Mexico Monterrey Office	+52 (472) 117-2157 +52 (81) 1104-2479
Brazil: Tex Equipamentos Eletronicos Ind. Com. Ltda.	+55-(0)11-4591-2825
Australia: Industrial Research Technology Pty. Ltd.	+61-(0)412-176-674

LS-R912-985B1-B