

# PRODUCT INFORMATION

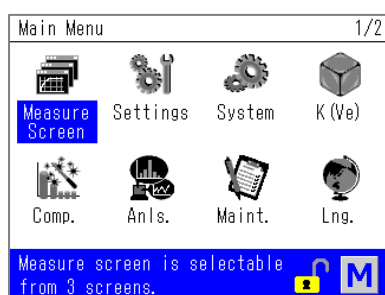


## AIR LEAK TESTER LS-R700



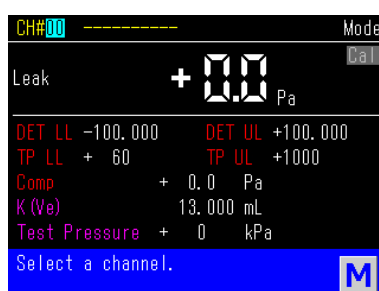
Entry-level model with a good balance of features and price  
Compact, high-performance, easy-to-use Air Leak Tester

### ■ Features



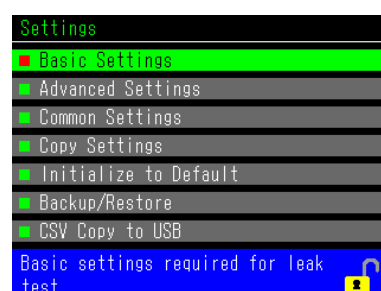
#### Icons on Main Menu

The icons help you easily navigate operating the tester.



#### Measurement screens depending on the purpose

Display can be switched even during measurement.  
Standard, Advanced, Waveform



#### Guidance bar

Explains the screen display and how to operate.



Mastering provides highly accurate test results.



Waveform display for test pressure and differential pressure (leak)



Multi-language (Japanese, English, Chinese)



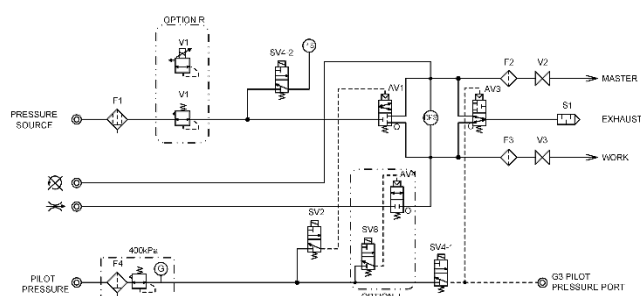
USB port for easy data collection

### ■ Other Features

- 3.5-inch color LCD
- Electro-Pneumatic Regulator
- Mastering
- Exhaust Interference Prevention
- Intelligent Pneumatic Circuit
- Noise Reduction (NR)
- Drift Compensation
- RS-232C
- K(Ve) Auto Setup
- Self Check
- Fixed Compensation
- Control I/O Port
- Two sets of leak limits
- Sensor Protection
- Charge Hold
- Quick Mounting Brackets

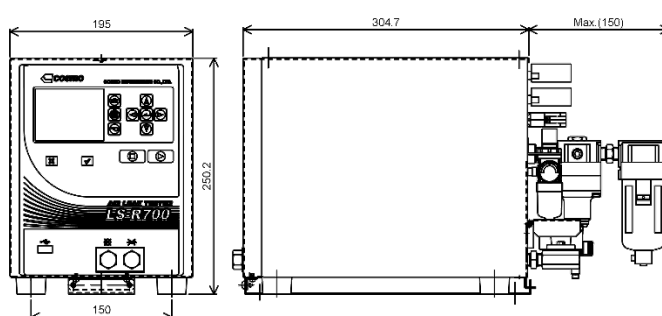
### ■ Pneumatic Circuit

Standard: Intelligent 1 Pneumatic Circuit



### ■ External Appearance

Dimensions (W195 x H250.2 x D304.7 mm)



LS-R700-985B1-I

## ■ Specifications

DPS	Resolution	0.1 Pa	Air Pressure Source	Clean air [The source pressure must be sufficiently higher than the test pressure] Compressed Air Quality Class JIS B 8392-1 (2012) / ISO 8573-1 (2010) [1.4.1] * Except for high pressure testers	
	Display Range	± 999.9 Pa (Accuracy guaranteed range ± 1000 Pa)			
	Accuracy *1	±2.5% of rdg ±1 Pa, 50 Pa or less: ±2 Pa			
	Sensor Proof Pressure	5 MPa			
PS	Reading Accuracy	±1% of F.S. ±1 digit (Linearity, Hysteresis and Repeatability)	Pilot Pressure	Filter regulator for Pilot pressure Range: 400 to 700 kPa	
	Temperature Characteristics	±0.1% of F.S./°C	Port Size	Rc1/4 (Test pressure source, Work and Master ports) 6 mm quick disconnect fitting (Pilot pressure source)	
Display Unit *2	Test Pressure	kPa, MPa (kg/cm <sup>2</sup> , PSI, bar, mbar, mmHg, cmHg, inHg)	RS-232C (D-sub 9 pins)	I/F fixed length ID/F fixed length	Test parameters as well as test results are transmitted.
	Leak	Pa, kPa, mL/s, mL/min, L/min, Pa·m <sup>3</sup> /s, E-3 Pa·m <sup>3</sup> /s, Pa/s, Pa/min, *Pa/s, *Pa/min (mmH <sub>2</sub> O, inH <sub>2</sub> O, mmHg, in <sup>3</sup> /min, in <sup>3</sup> /d, ft <sup>3</sup> /h)		T/F fixed length	Only test results are transmitted
	Equivalent Internal Volume	mL, L (in <sup>3</sup> , ft <sup>3</sup> )		Others	Other formats
Leak Display		4 digits, Sampling rate 10 times/sec	USB Port	Data output	Judgment, Leak, Test pressure, Channel#, Timers, etc.
Leak Limit		Up to ±999.9 Pa		Test parameter output	Settings on all settings screens
Leak Limit		Up to ±999.9 Pa	Standard Accessories	Oil mist separator and regulator for Test pressure, Filter regulator for Pilot pressure, Quick mounting brackets, I/O connector, Power cable, Inspection Record of the product, Calibration Certificate of the standard, Operation manual CD	
Number of Channels		32ch (0 to 31)			
Timer Setting Range		Up to 999.9 s (Resolution: 0.1 s)			
Power Source		100 to 240 VAC, 50/60 Hz, 70 VA max			
Ambient Temperature		5 to 45 °C			
Humidity		80 %RH or less / no dew condensation	*1	For the option of DPS Range ±10 kPa: ±5% of rdg ±0.01 kPa. However, for 0.2 kPa or less, ±0.02 kPa. The units in ( ) are not available for SI unit restriction models.	
Weight		Approx. 10 kg	*2		

## ■ Model Classification

Model LS-R700(ABC.D.E) A, B, D and E in the model notation are mandatory.

A	Pneumatic Circuit	Intelligent 1 Pneumatic Circuit	A1	Large flow circuit with great sensor protection features
		Intelligent 2 Pneumatic Circuit	A2	Enhanced safety and self-check using equalization valve
		Micro Volume Circuit	AS01	For works with volume approx. 10 mL or less, and the leak specification is quite small.
		Small Volume A1 Circuit	AS1	For works with volume approx. 100 mL or less, and high detection performance is required.
		Secondary Pressure Circuit* 1	C	For external pressure (secondary pressure) test
B	Test Pressure Range	Medium	M	Range: 50 to 800 kPa (PS 1 MPa, Regulator: 0.8 MPa)
		Low	L	Range: 10 to 100 kPa (PS 100 kPa, Regulator: 200 kPa)
		Micro Low	L02	Range: 5 to 20 kPa (PS 20 kPa, Regulator: 200 kPa)
		Vacuum	V	Range: -5 to -100 kPa (PS -100 kPa, Regulator: -100 kPa)
		High *2	H20	Range: 2.0 MPa or less (PS 2 MPa, without regulator)
	E/P Regulator	Medium	MR	Range: 50 to 800 kPa (PS 1 MPa, Regulator: 0.9 MPa)
		Low	LR	Range: 10 to 95 kPa (PS 100 kPa, Regulator: 100 kPa)
		Vacuum	VR	Range: -5 to -75 kPa (PS -100 kPa, Regulator: -80 kPa)
C	Options	External Exhaust Valve Ready *3	G	External Exhaust Valve is sold separately
		With CAL Driving Valve For Leak Master	J	The valve on the CAL port opens/closes automatically (Leak Master sold separately)
		Bypass Circuit Without regulator	B	Bypass Circuit Unit is sold separately
		Ready With regulator	B1	
		Stop Valve Monitoring	W	Monitors opening and closing of the Stop Valves.
		Pressure/Vacuum Sensor	PV1	Pressure/Vacuum sensor (Low: ± 100 kPa, Medium: -100 to 1000 kPa)
		Without Precision Regulator (L, M, V)	E1	Without Precision regulator
		Blow Orifice Φ1.2 *4	F1	Standard orifice changed from Ø 3.2 to Ø 1.2
		E/P Regulator Ready	R1	With output connector for E/P Regulator
		Nylon Filter Housing	RX02	Filter housing for the pilot pressure port is nylon
		Filter Replacement	RX03	Filter housings for the pilot pressure and test pressure ports are nylon
		Filter Replacement	RX06	Pilot Pressure Port Comes with Filter Only
D	Display Unit	DPS range ± 10 kPa	D4	DPS range: ±10 kPa Resolution: 1 Pa
		NPT Fittings	PX1	NPT thread fittings
			UX1	SI units only (Mandatory for Japanese customers)
E	Power Cable		UX2	All units (Only for overseas)
			VA	125 VAC, 3 m
			VE	250 VAC, 2 m
			VK	250 VAC, 2 m (Only for Chinese customers)

\*1 "External Exhaust Valve Ready (G)" and "With CAL Driving Valve For Leak Master (J)" are not available.

\*2 H20 models come without regulator. "With CAL Driving Valve For Leak Master (J)" is not available.

\*3 Standard specification. Cannot be selected if V or VR is specified for the Test Pressure Range.

\*4 Standard specification for the Micro Volume Circuit (AS01). Also, select when the test pressure is -10 to -4 kPa.

\* The contents of this Product Information are as of August 2025. The specifications are subject to change without prior notice.

## Cosmo Instruments Co., Ltd.

2974-23 Ishikawa, Hachioji, Tokyo 192-0032 Japan

China:	Cosmo Instruments (China, Jiaxing) Co., Ltd.	+86-(0)573-82800886
	Shanghai Office, Tianjin Office, Guangzhou Office, Chongqing Office, Changchun Office, Wuhan Office	
Korea:	Cosmo Korea Co., Ltd. Incheon Office	+82-(0)32-623-6961
	Changwon Office	+82-(0)55-264-1358
Taiwan:	Taiwan Cosmo Instruments Co., Ltd.	+886-(0)2-2707-3131
	Taichung Office	+886-(0)4-2270-2286
Malaysia:	COSMOWAVE SDN. BHD.	+60-(0)3-51626677
Thailand:	Cosmowave Technology Co., Ltd.	+66-(0)2-7361667
Indonesia:	Pt. Cosmowave	+62-(0)21-89328750

<http://www.cosmo-k.co.jp/>

Phone: +81-(0)42-642-1357 Fax: +81-(0)42-646-2439

Vietnam:	Cosmowave Vietnam Co., Ltd.	+84-(0)24-37876085
India:	Cosmo Instruments India Pvt. Ltd. Head Office	+91-(0)124-421-0946
	South Zone Regional Office, Pune - Chakan Office, Chennai Office, Gujarat Office	
Germany:	Cosmo EU Solutions Technology GmbH	+49-212-38367171
USA:	Cosmo Solutions Technology, Inc.	+1-248-488-2580
Mexico:	Cosmo De Mexico, Silao Office	+52 (472) 117-2157
	Monterrey Office	+52 (81) 1104-2479
Brazil:	Tex Equipamentos Eletronicos Ind. Com. Ltda.	+55-(0)11-4591-2825
Australia:	Industrial Research Technology Pty. Ltd.	+61-(0)412-176-674

LS-R700-985B1-I