



Loaded with advanced features evolved throughout
our extensive knowledge and experiences



FULL-COLOR TOUCH-SCREEN DISPLAY

Easy-to-navigate and intuitive interface with simple menu configurations



USER SELECTABLE MULTI-LANGUAGE CAPABILITY

Selectable from English, Japanese, Chinese, Korean, German, Spanish and Portuguese.



WAVEFORM MEASUREMENT DISPLAY

Graphical display of the test pressure and measured differential pressure



EXTERNAL PNEUMATIC CIRCUIT

Detects blockage of select valves and exhaust valves connected to the LS-R900.

* The effect varies depending on the conditions.



AUTOMATIC SETUP FEATURE FOR EASY PROGRAMMING

Supports initial test parameter programming by determining stage timers.



USB PORT FOR EASY DATA STORAGE

Test results can be automatically copied to a USB Memory after every test, test parameters and System data backup can be stored as well.

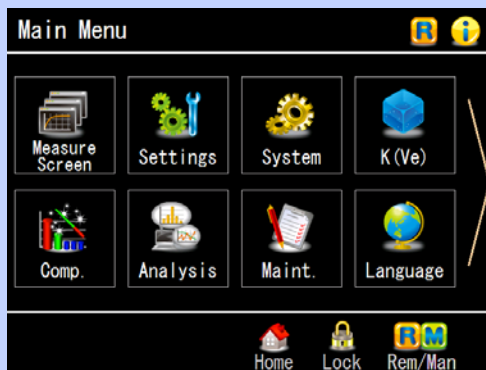


MASTERING FEATURE PROVIDES HIGHLY ACCURATE TEST RESULTS

Provides faster and more accurate test results by compensating for environmental drifts. Using the Mastering feature, variety of parts can share a Master Chamber as a reference.

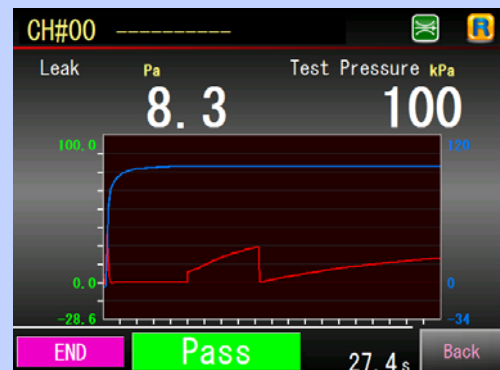
COSMO INSTRUMENTS CO, LTD.

Easy-to-navigate configuration with icons



Intuitive operation makes test parameter programming easy.

Selectable Measurement Screens



Measurement screens is selectable from 6 different screens. For four measurement screens, "Standard", "Simple", "Waveform" and "4-Channel", the items to be displayed can be customized.

Settings Menus



Large numeric keyboard pops up for easy test parameter settings.

Helpful User-Support Features

Common Peripherals

2 Leak Master: LM-1C

A leak standard for daily checks of leak tester readouts and leak limits.

It can be connected directly to the CAL port of Cosmo's air leak testers.



Back

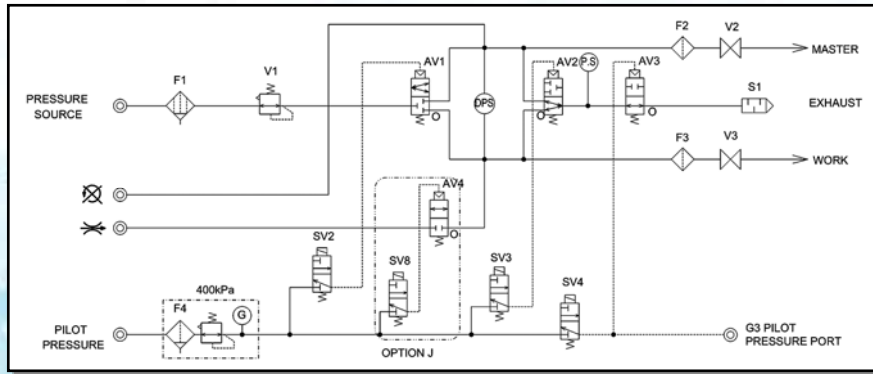
In addition to the sophisticated testing capability, LS-R900 comes with wide variety of user-support features such as Information, Troubleshooting, Calculation tools and List of common peripherals.

Other Features

Display	Full-color 5.7-inch LCD touch-screen
	Selectable from 6 different measurement screens
Intelligent Pneumatic Circuit	Comes with self-check features: Sensor sensitivity, Air-valve performance
K(Ve) Setup	K(Ve) can be setup using a calibrator, Leak Master or Auto-Leak Calibrator (ALC) to convert measured pressure to a flow rate.
Leak Limits	Two sets of leak limits: Medium/Small leaks on Work-side (UL/UL2) and Master-side (LL/LL2)
Electro-pneumatic Regulator	For the models come with Electro-pneumatic regulator, different test pressure can be set independently for each channel.
Noise Reduction (NR)	Eliminates noise by repeating the DET stage when the reading falls between DET UL and DET UL2.
Operation manual download	Operation manual in each language can be downloaded through the USB port.
Drift Compensation	Mastering, Auto-Drift Compensation, Compensation Limits, Number of Samples
Self-Check	Air-operated valve performance, DPS/PS Offset, CPU performance and others

Sensor Protection	Air-Blow (Intelligent Pneumatic Circuit):	The pneumatic circuit is cleaned at the end of every leak test.
	External Exhaust Valve Ready: Valve is sold separately.	
Exhaust Interference Prevention	Exhaust timing will be controlled for the cases where multiple cavities are tested simultaneously.	
Charge Hold	Tester pressurizes the tested part continuously. Used to locate leaks.	
Control I/O	Both for NPN-PNP For Phoenix Contact connector, wire connection can be done with a flat-bladed screwdriver.	
Serial Communication	RS-232C: 2 ports one each on the front and rear panels. USB: 1 port	
Mastering Settings	Maximum Idle Time, Day of Week, Interval, Iteration, Consecutive Triggers, Mastering Limits	
Display/Messages	Error Message, Troubleshooting, I/O Monitor, Channel Title, Counter	
Quick Mounting Brackets	Tester can be mounted/removed with only two screws. Good for mounting the tester in the limited space.	

■ Pneumatic Circuit (Intelligent 2 Pneumatic Circuit)



■ General Specifications

Differential Pressure Sensor (Standard)	Resolution	0.1 Pa
	Accuracy Guaranteed Range	±1000Pa
	Reading Accuracy	±2.5% of rdg ±1Pa 50Pa or lower: ±2Pa
	Sensor Proof Pressure	5 MPa
Display Unit	Test Pressure Unit	kPa, MPa (PSI, kg/cm ² , bar, mbar, mmHg, cmHg, inHg)
	Leak Unit	Pa, kPa, mL/s, mL/min, L/min, Pa·m ³ /s, E-3 Pa·m ³ /s, Pa/s, Pa/min, *Pa/s, *Pa/min (mmH ₂ O, inH ₂ O, mmHg, in ³ /min, in ³ /d, ft ³ /h)
	K(Ve) Unit (Leak Coefficient)	mL, L (in ³ , ft ³)
Leak Display	3 to 5 digits (Floating point) Sampling Rate: 10 times/s	
Leak Limit Range	±999.9 Pa	
Number of Channels	32 channels (#0 to #31)	
Timers	Up to 999.9 s (Resolution: 0.1 s)	
Power Source	100 to 240 VAC ±10% at 50/60 Hz, 80 VA max	
Ambient Temperature	Operation Temp: 5 to 45°C Storage Temp: -20 to 60°C	
Humidity	80 %RH or less / no dew condensation	
Mass	Approx. 10 kg (Standard model)	

Test Pressure source	Clean air regulated to the test pressure. The source pressure must be sufficiently higher than the test pressure.	
Pilot Pressure	Clean air regulated from 400 to 700 kPa	
Tube Diameter	Rc(PT) 1/4 (Test pressure, Pilot pressure, Work and Master ports)	
CPU	ARM9 400MHz, DRAM 128MB	
RS-232C 2 ports (DE-9 pins)	I/F fixed length	Test parameters are transmitted as well as test results.
	ID/F fixed length	Only test results are transmitted
	T/F fixed length	Other formats
USB Port	Test Data	Judgment, Leak, Compensation value, Test pressure, Channel#, Timers, etc
	Exporting test parameters	csv file
	Test Parameter Backup/Restore System Backup/Restore, Upgrade	
Accessories	Oil mist separator and regulator (except H20 and H49), Filter regulator for Pilot pressure, Power cord, Quick mounting brackets, Control I/O connector, Inspection record, Traceability related documents, Operation manual	

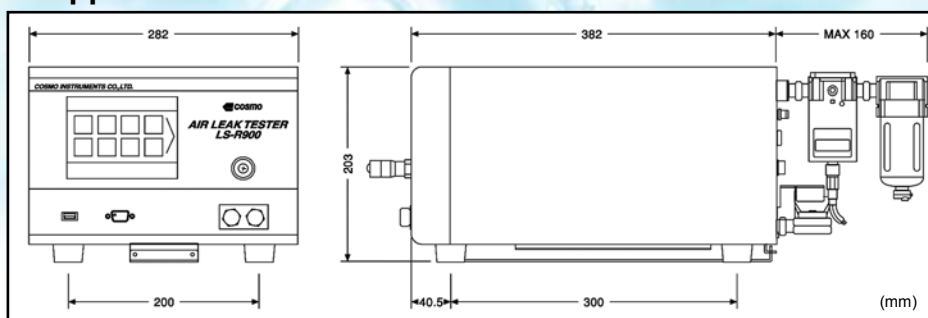
NOTE: Regulator and power cords are not included in scope of the CE declaration.

■ Model LS-R900 – 1 Pneumatic Circuit 2 Pressure Range 3 Options – 4 Power Cord

① Pneumatic Circuit	A1: Intelligent 1 Pneumatic Circuit, A2: Intelligent 2 Pneumatic Circuit AS1: Small Volume A1 Circuit, AS01: Micro Volume Circuit, C: Secondary Pressure Circuit	
② Pressure Range	Precision Regulator	L02: 5 to 20kPa, L: 10 to 100kPa, M: 50 to 800kPa, V: -5 to -100kPa, H20: 2.0MPa or lower *1, H49: 4.9MPa or lower *1
	EP Regulator	LR: 10 to 95kPa, MR: 50 to 800kPa, VR: -5 to -75kPa
③ Options	J: Comes with CAL Driving Valve for Leak Master, K05: Comes with ALC-05 0.5mL, K1: Comes with ALC-1 1mL, K4: Comes with ALC-4 4mL, K10: Comes with ALC-10 10mL, B: Bypass Circuit Ready without regulator, B1: Bypass Circuit Ready with regulator D4: Differential Pressure Sensor Range: ±10kPa, PV1: Pressure/Vacuum Pressure Sensor PX2: Rechargeable Battery (CE and UL not conformed), UX3: UL conformed	
④ Power Cord	VA: 125VAC/7A Length: 3m, VE: 250VAC/10A Length: 2m (CE conformed)	

* 1 H20 and H49 models come with no regulator.

■ External Appearance



Air Leak Tester Common Peripherals

MC Master Chamber

A standard master replacing a known good part that is robust and has excellent repeatability.
A model dedicated for Mastering feature is also available.



G3-ME External Exhaust Valve

Installing it between Air Leak Tester and tested part prevents the tester from contamination with oil and water.
This can be driven by Air Leak Testers.



LM-1C Leak Master

A leak standard for daily checks of Leak Tester readouts.
This is also used for K(Ve) setup.



QLC Quick Leak Calibrator

A leak calibrator for Air Leak Testers that precisely generates the specified volume displacement through a single operation.



NL NL Select Valve

A dedicated switching valve for Air Leak Testers



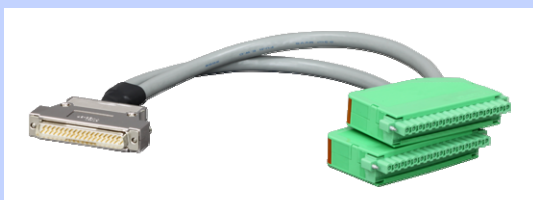
BU Bypass Unit

Using Bypass Unit for leak testing parts with a large volume can reduce the test time.



CX Conversion Cable

Used for installing LS-R900 for a replacement of an older model.



PLC PC Link Software 4

Application for Windows OS to analyze and display the data acquired from LS-R900 on a computer..



* The contents of this catalog are as of October 2016. The specs are subject to change without notice.

Cosmo Instruments Co., Ltd.

2974-23 Ishikawa, Hachioji, Tokyo 192-0032 Japan

<http://www.cosmo-k.co.jp>

Phone: +81-(0)42-642-1357 Fax: +81-(0)42-646-2439

China: Cosmo (Shanghai) Trading Co., Ltd.	+86-(0)21-6575-6880
Shanghai, Tianjin, Guangzhou, Chongqing, Changchun, and Wuhan	
Korea: Cosmo Korea Co., Ltd.	+82-(0)32-623-6961
Taiwan: Taiwan Cosmo Instruments Co., Ltd.	+886-(0)2-2707-3131
Malaysia: Wave Electronics & Electrical System Sdn. Bhd.	+60-(0)3-51626677
Thailand: Cosmowave Technology Co., Ltd.	+66-(0)2-7361667
Indonesia: Pt. Cosmowave	+62-(0)21-42900043
Vietnam: Cosmowave Technology Co., Ltd. Vietnam Representative Office	+84-(0)47876085

India: Cosmo Instruments India Pvt. Ltd. Head Office	+91-(0)124-421-0946
Cosmo Instruments India Pvt. Ltd. South Zone Regional Office	+91-(0)9663384423
Cosmo Instruments India Pvt. Ltd. Pune - Chakan Office	+91-(0)20-6933-2345
Germany: Cosmo EU Solutions Technology GmbH	+49-(0)212-383671-71
UK: Fletcher-Moorland Ltd.	+44-(0)1782-411021
USA: Cosmo Solutions Technology, Inc.	+1-248-488-2580
Mexico: Cosmo De Mexico	+52 472 748 62 94
Brazil: Tex Equipamentos Eletronicos Ind. Com. Ltda.	+55-(0)11-4591-2825
Australia: Industrial Research Technology Pty. Ltd.	+61-(0)412-176-674